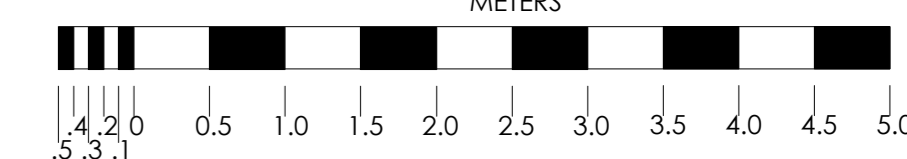


SCALE: @ A0 1:50



These plans are indicative only and The London Studios (TLS) does not guarantee the accuracy or completeness of any description, dimensions and other details contained herein. [Please rely on your own survey for accurate and precise measurements and detail].

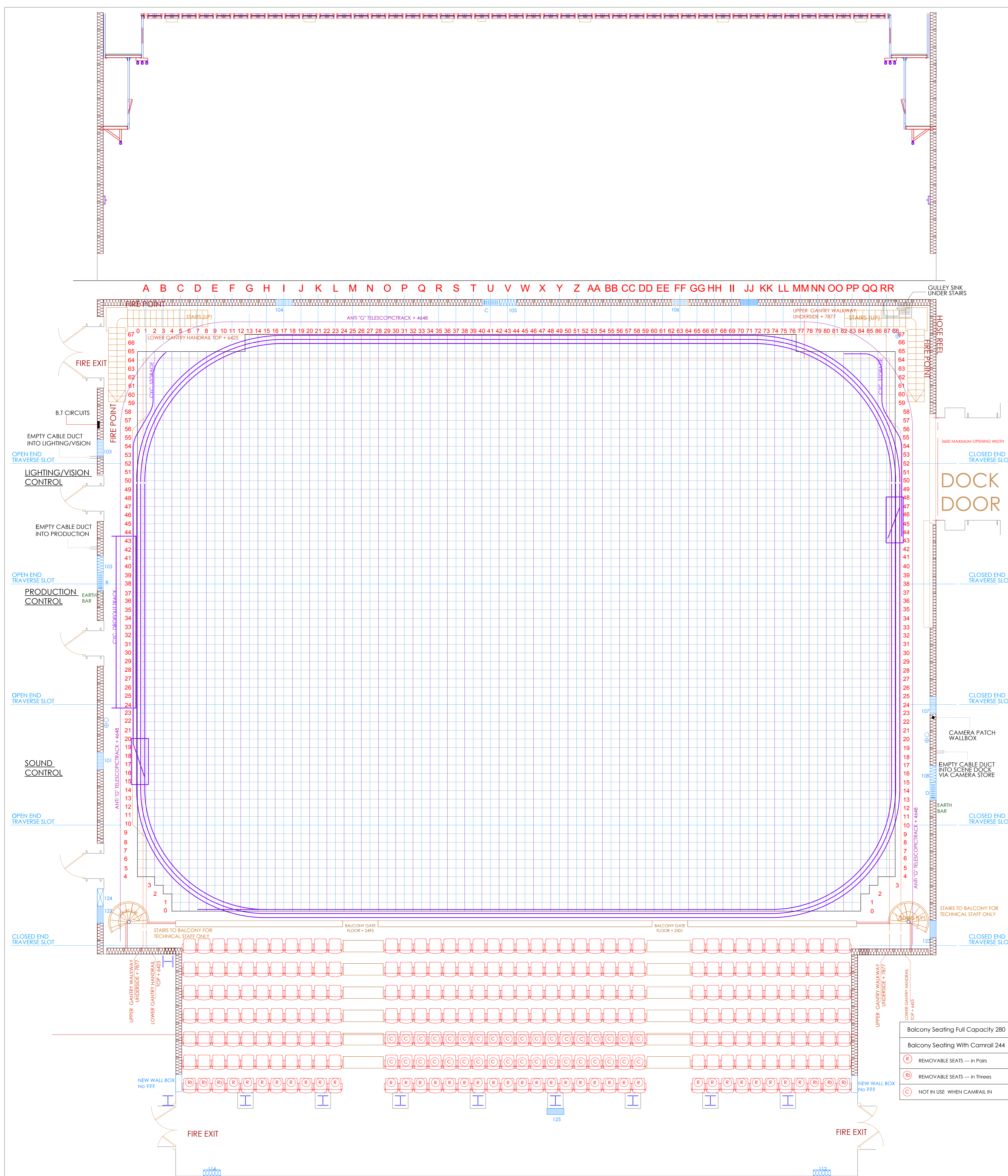
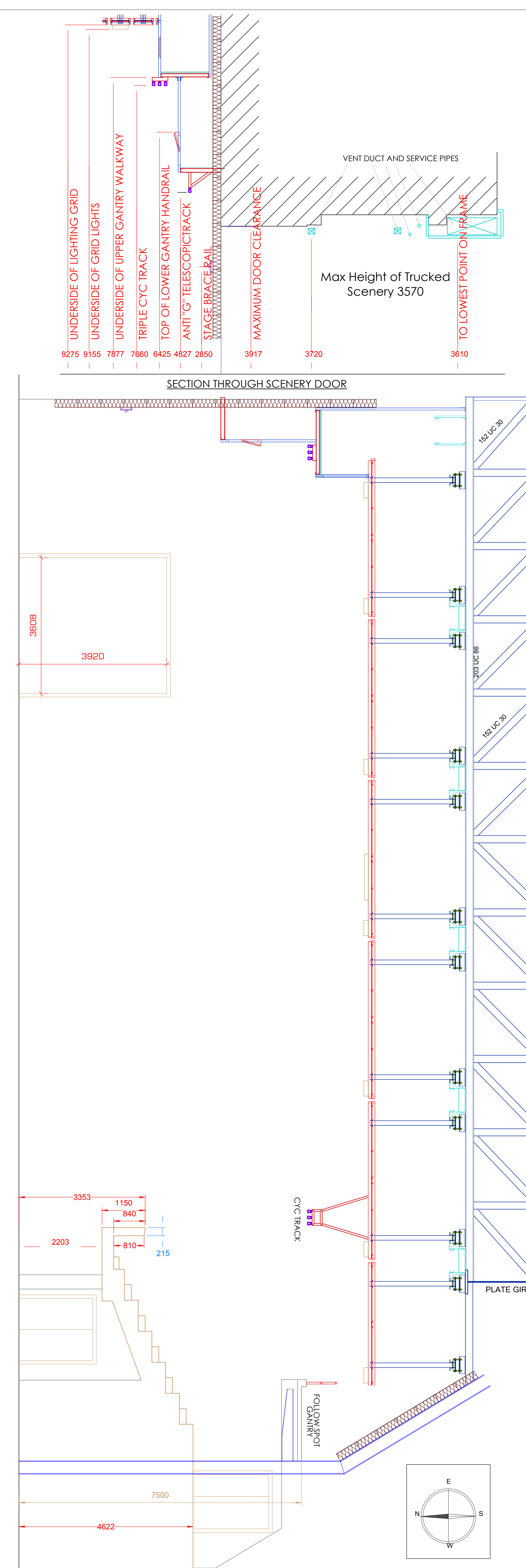
TECHNICAL LEGEND

STAGE TRACK S.W.L 110KG PER 4.22 MTR
LIGHTING TRACK S.W.L 300KG PER 4.22 MTR

FLOOR LOAD = NOT EXCEED 1000Kg/m²
ANTI-G TELESCOPE ON CENTRE TRACK- 21336mm LONG
MAIN CYC. ON CENTRE TRACK- 51816mm LONG
TRIPLE CYC. TRACK AT + 7640mm UNDER
ANTI-G TELESCOPE TRACK AT + 4827mm UNDER
UNDER AUDIENCE BALCONY + 2203mm
FOLLOW GANTRY FLOOR AT + 7500mm
GANTRY RAIL AT + 6425mm

SPECIFIC INSTRUCTIONS

PRODUCTION: _____
DIRECTOR: _____
PRODUCTION MANAGER: _____
STUDIO MANAGER: _____
DESIGNER: _____
LIGHTING DIRECTOR: _____
DRAWN BY: _____
DATE OF ISSUE: _____
DRAWING ISSUE #: _____
SET & LIGHT DATE: _____



Balcony Seating Full Capacity 280
Balcony Seating With Camrail 244
(R) REMOVABLE SEATS — in Pairs
(B) REMOVABLE SEATS — in Threes
(C) NOT IN USE WHEN CAMRAIL IN