

These plans are indicative only and The London Studios (TLS) does not guarantee the accuracy or completeness of any description, dimensions and other details contained herein. [Please rely on your own survey for accurate and precise measurements and detail].

NOTES:

FLOOR TREATMENT: STUDIO 5 HAS A PERMANENT BLACK NON-PAINTABLE FLOOR, ANY COLOUR CHANGE REQUIRED CAN ONLY BE ACHIEVED WITH REMOVEABLE SCREENVIN OR LINO.

ALL TREATMENTS MUST BE DISCUSSED WITH SCENIC SERVICES.

RESTRICTED SCENERY ACCESS - A SITE VISIT IS HIGHLY RECOMMENDED BEFORE MANUFACTURE.

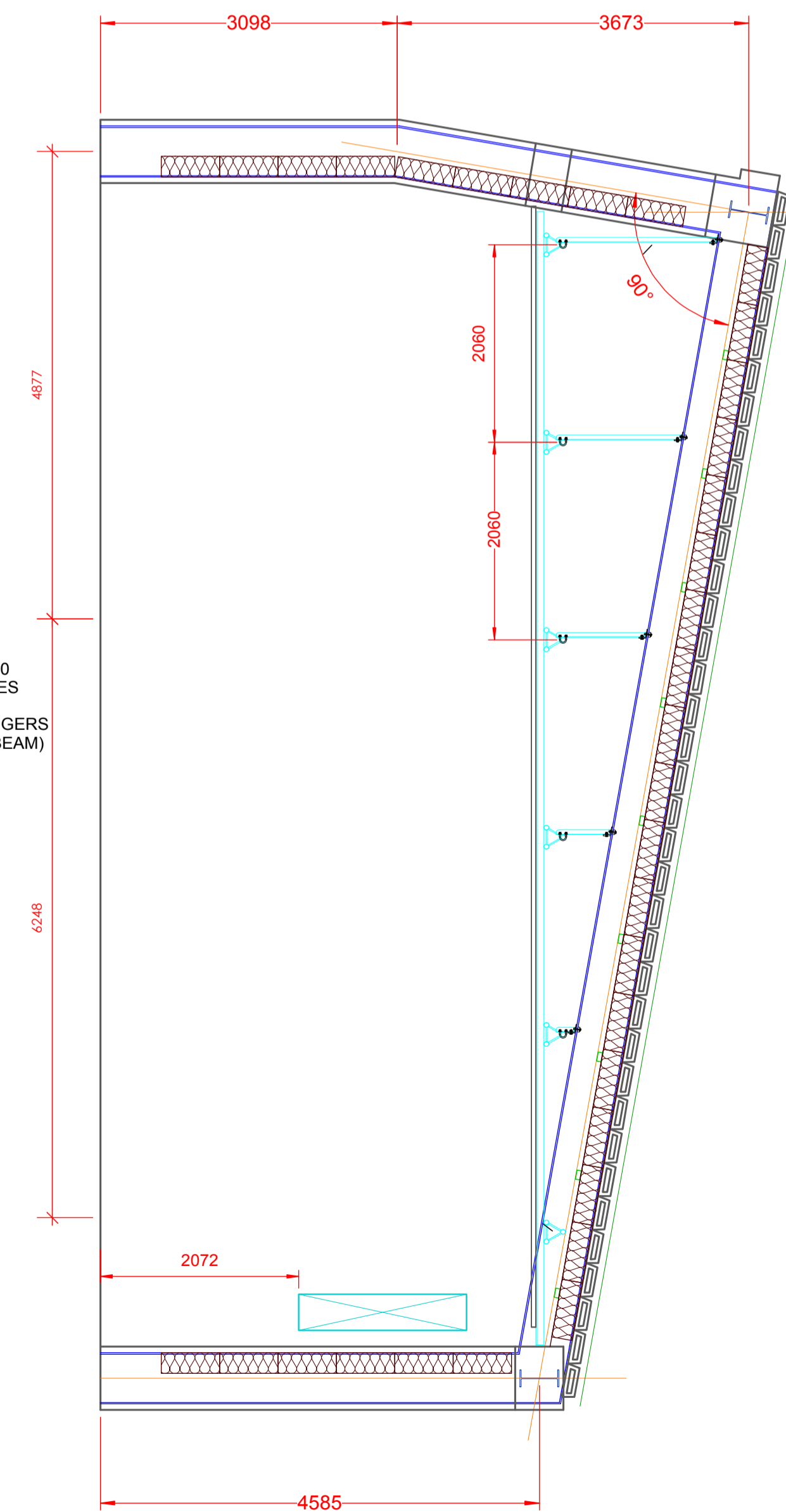
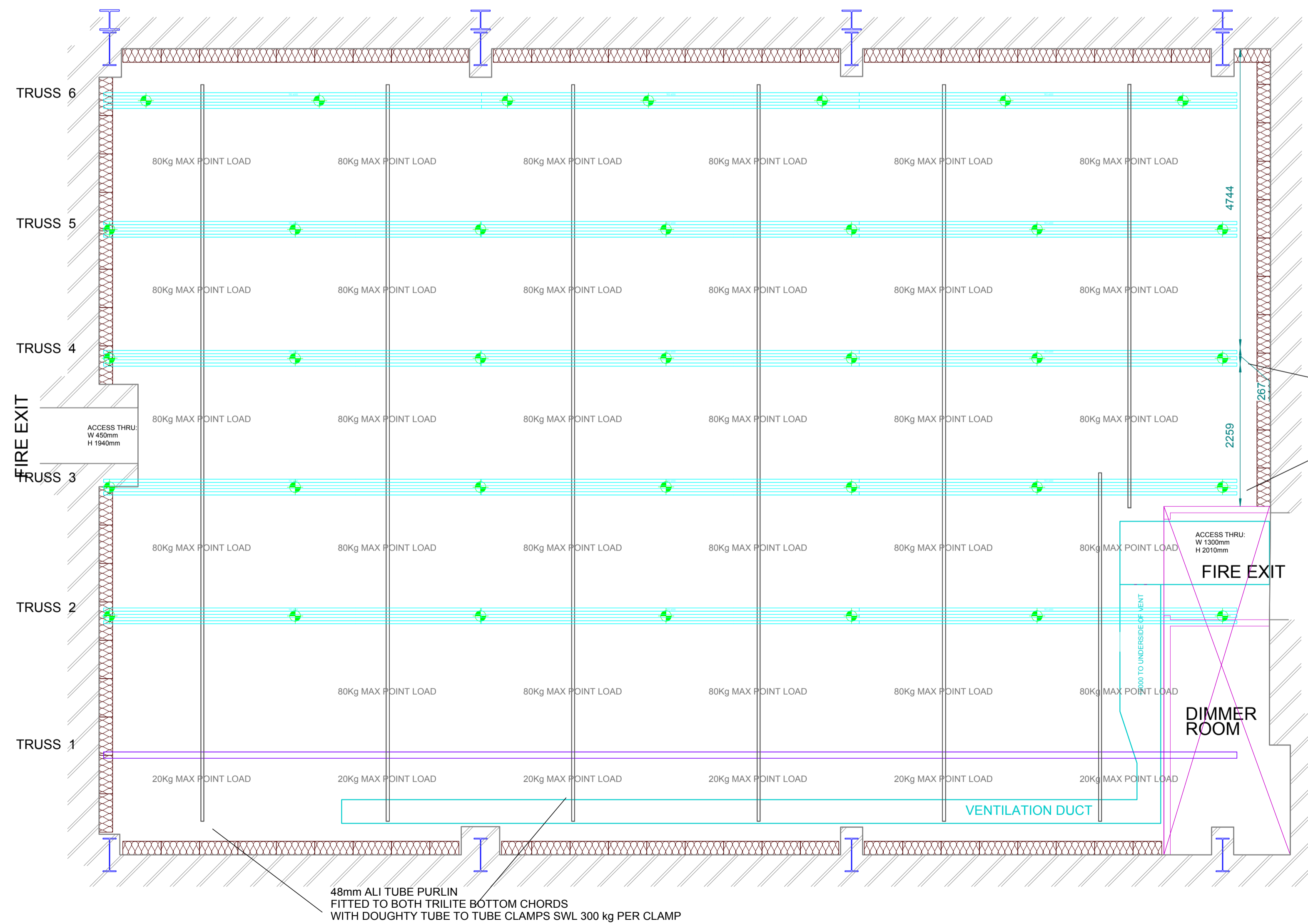
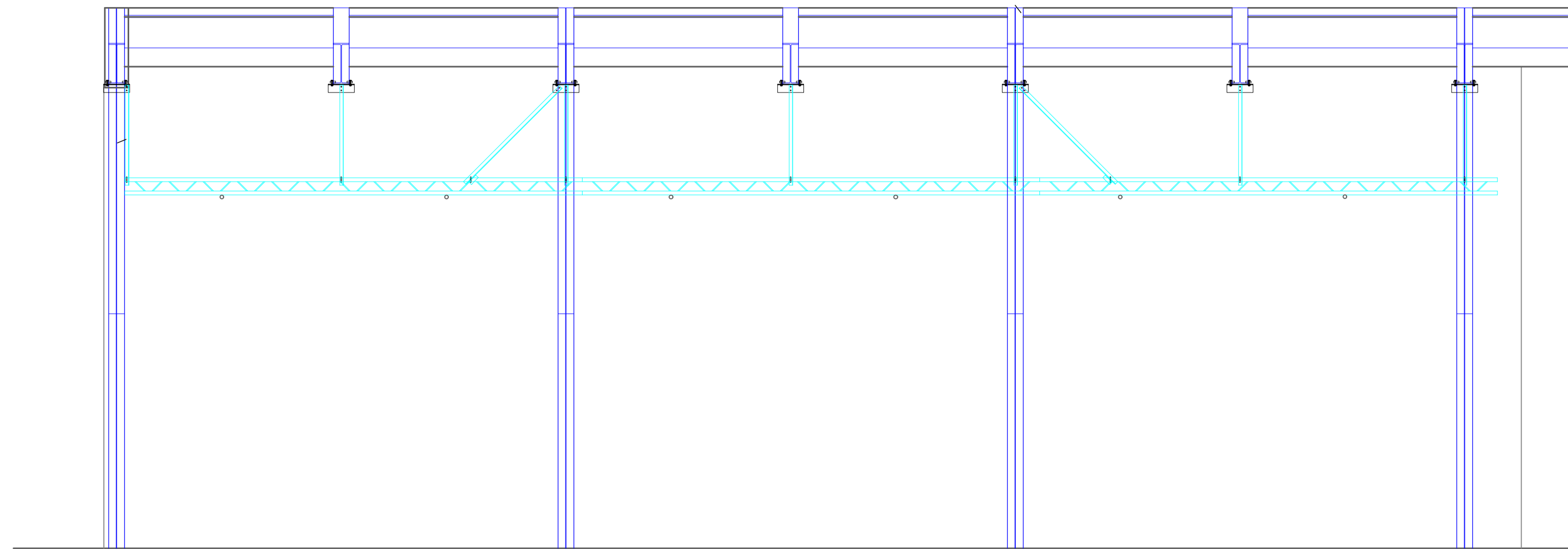
LIGHTING GRID NOTE

LOADING VALUE FOR THE EXISTING TUBULAR LIGHTING GRILLAGE CAN NOT BE DETERMINED, THIS IS DUE TO UNIDENTIFIABLE CONNECTION DETAILS .I.E CLIP FIX & NON-STANDARD SPLICE CONNECTIONS.

LIVE LOAD CAPACITY NOTE

MAXIMUM HANGING SERVICES LOAD CAPACITY THAT CAN BE SUPPORTED FROM EACH EXISTING ROOF BEAM IS:- 177kg HANGING LOAD PER METER RUN OF THE ROOF BEAM, THIS EQUATES TO 60kg/m² SUPPORTED AT GRID LEVEL.

SPECIFIC INSTRUCTIONS



PRODUCTION: _____

DIRECTOR: _____

PRODUCTION MANAGER: _____

STUDIO MANAGER: _____

LIGHTING DIRECTOR: _____

DESIGNER: _____

DRAWN BY: _____

DATE OF ISSUE: _____

DRAWING ISSUE #: _____

SET & LIGHT DATE: _____

