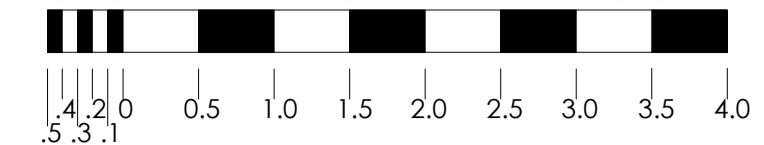


A B C D E F G H I J K L M N O P Q R S T U V W X Y Z AA BB CC DD EE FF GG HH II JJ KK LL MM NN OO PP QQ RR

SCALE: @ A1 1:50 METERS



These plans are indicative only and The London Studios (LS) does not guarantee the accuracy or completeness of any description, dimensions and other details contained herein. Please rely on your own survey for accurate and precise measurements and details.

TECHNICAL LEGEND

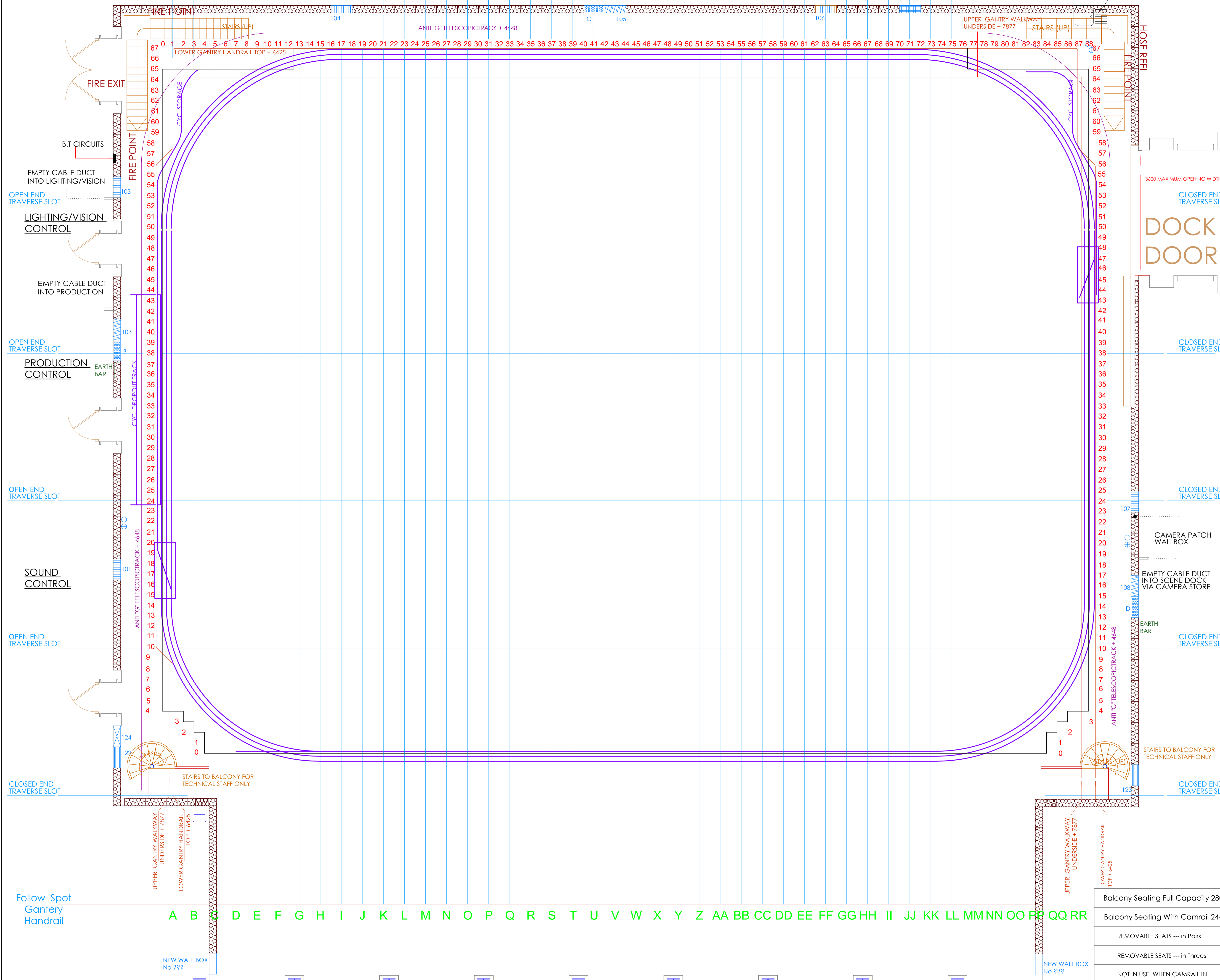
- LIGHTING TRACK S.W.L 300KG PER 4.22 MTR
- FLOOR LOAD = NOT EXCEED 1000Kg/m<sup>2</sup>
- ANTI-G TELESCOPE ON CENTRE TRACK- 21336mm LONG
- MAIN CYC. ON CENTRE TRACK- 51816mm LONG
- TRIPLE CYC. TRACK AT + 7660mm UNDER
- ANTI-G TELESCOPE TRACK AT +4827mm UNDER
- UNDER AUDIENCE BALCONY + 2203mm
- FOLLOW GANTRY FLOOR AT + 7500mm
- LOADING GANTRY FLOOR (LIGHTING) AT + 7877mm
- GANTRY RAIL AT + 6425mm

SPECIFIC INSTRUCTIONS

PRODUCTION: \_\_\_\_\_  
 DIRECTOR: \_\_\_\_\_  
 PRODUCTION MANAGER: \_\_\_\_\_  
 STUDIO MANAGER: \_\_\_\_\_  
 DESIGNER: \_\_\_\_\_  
 LIGHTING DIRECTOR: \_\_\_\_\_  
 DRAWN BY: \_\_\_\_\_  
 DATE OF ISSUE: \_\_\_\_\_  
 DRAWING ISSUE #: \_\_\_\_\_  
 SET & LIGHT DATE: \_\_\_\_\_

**STUDIO 1**  
**THE LONDON STUDIOS**

|                                   |
|-----------------------------------|
| Balcony Seating Full Capacity 280 |
| Balcony Seating With Camrail 244  |
| REMOVABLE SEATS --- in Pairs      |
| REMOVABLE SEATS --- in Threes     |
| NOT IN USE WHEN CAMRAIL IN        |



A B C D E F G H I J K L M N O P Q R S T U V W X Y Z AA BB CC DD EE FF GG HH II JJ KK LL MM NN OO PP QQ RR

Follow Spot Gantry Handrail

