

These plans are indicative only and The London Studios (TLS) does not guarantee the accuracy or completeness of any description, dimensions and other details contained herein. [Please rely on your own survey for accurate and precise measurements and detail].

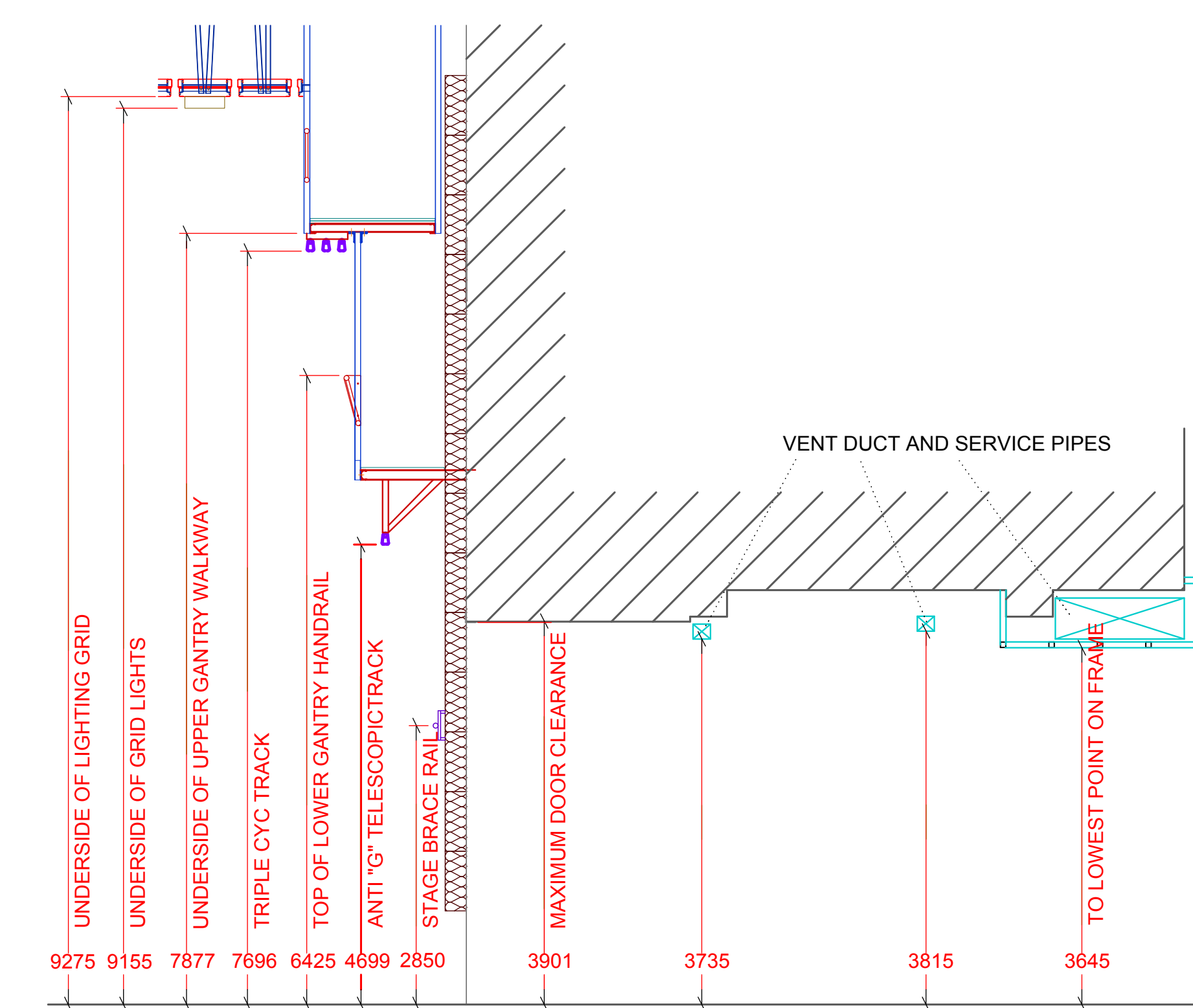
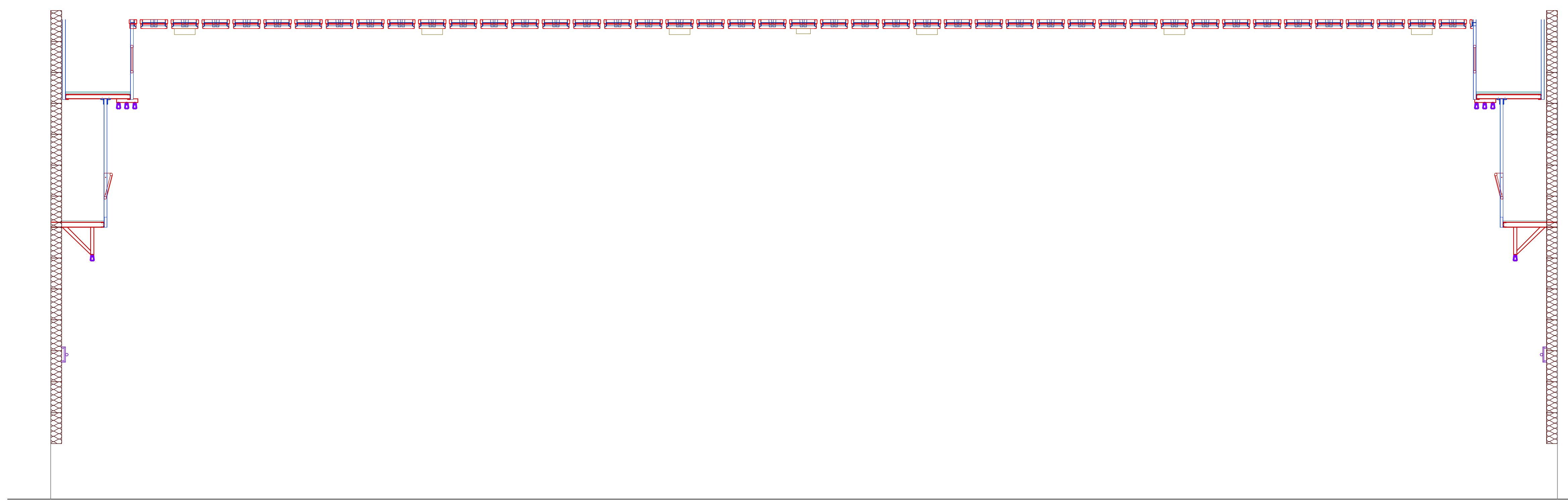
TECHNICAL LEGEND

- STAGE TRACK S.W.L 110KG PER 4.22 MTR
- LIGHTING TRACK S.W.L 300KG PER 4.22 MTR

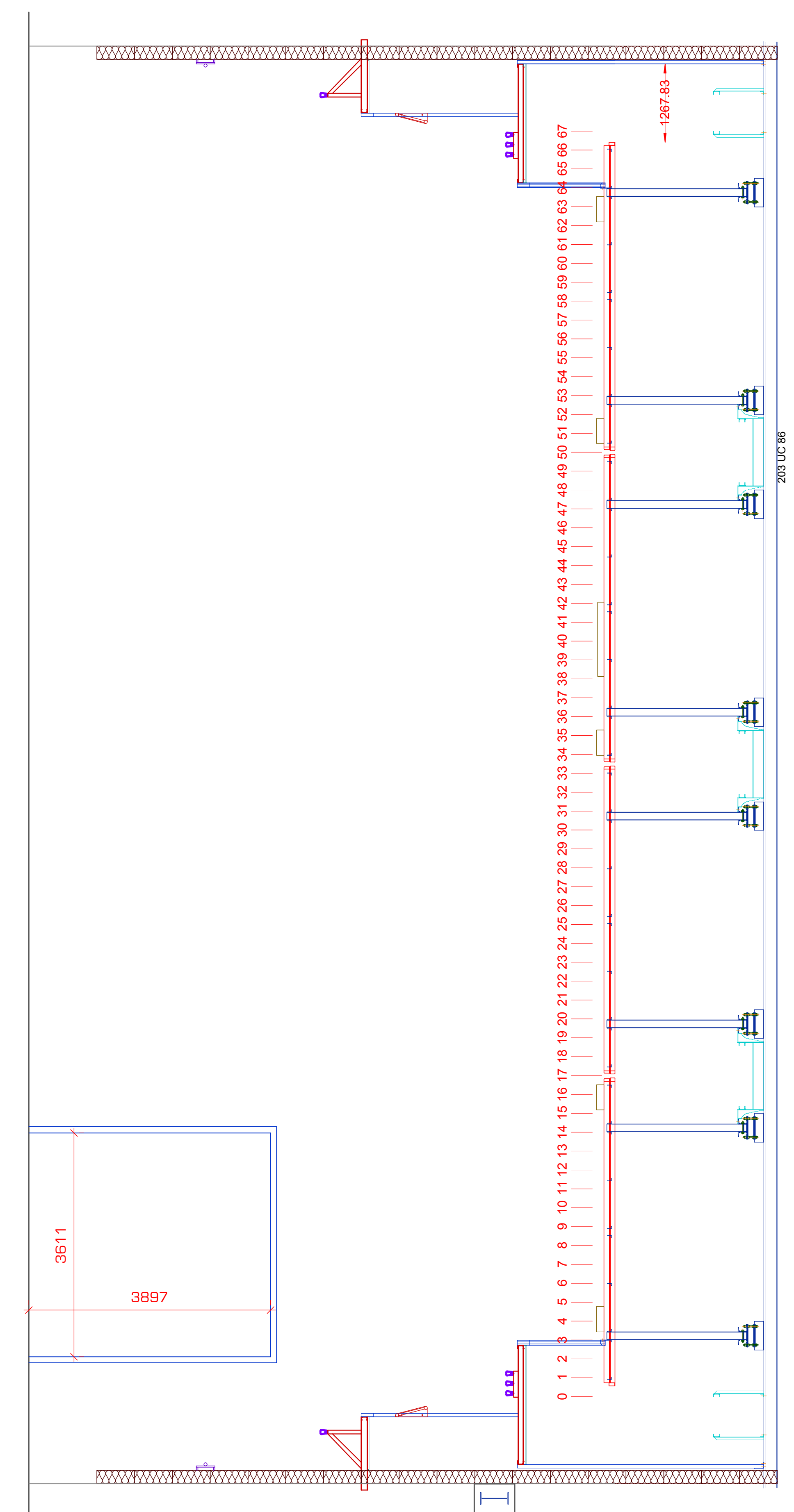
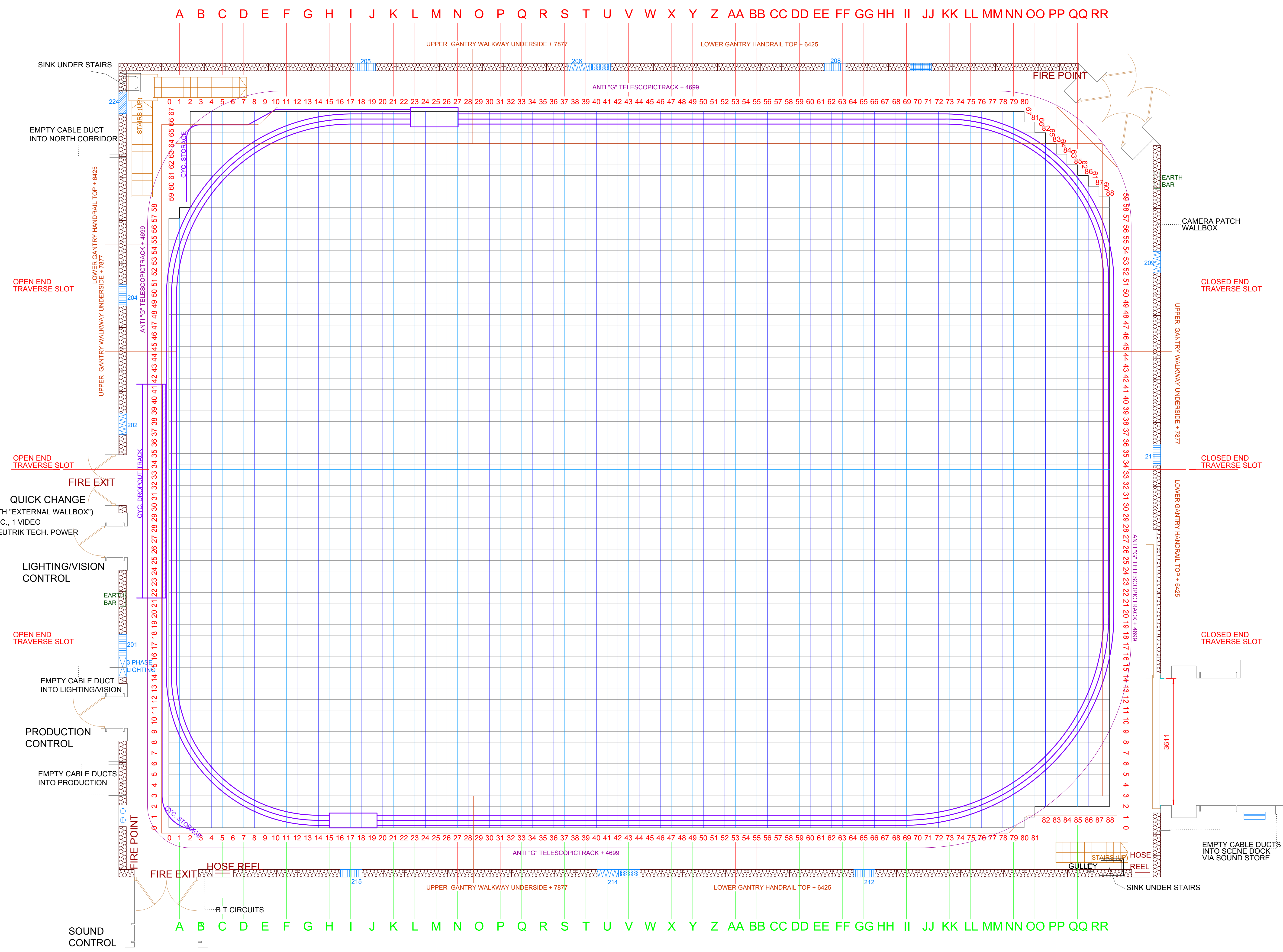
- 4 X 10 WAY D.M.X. OUTLETS
- 72 X 16 AMP NON DIMMED OUTLET
- GRID DISTRIBUTION

- FLOOR LOAD = NOT EXCEED 1000Kg/m²
- MAIN CYC. ON CENTRE TRACK- 45720mm LONG
- TRIPLE CYC. TRACK AT + 7696mm UNDER
- ANTI-G TELESCOPE TRACK AT +4699mm UNDER
- LOADING GANTRY FLOOR (LIGHTING) AT + 7877mm
- GANTRY RAIL AT + 6425mm

SPECIFIC INSTRUCTIONS



SECTION THROUGH SCENERY DOOR
Max Height of Trucked Scenery
3570



PRODUCTION: _____

DIRECTOR: _____

PRODUCTION MANAGER: _____

STUDIO MANAGER: _____

DESIGNER: _____

LIGHTING DIRECTOR: _____

DRAWN BY: _____

DATE OF ISSUE: _____

DRAWING ISSUE #: _____

SET & LIGHT DATE: _____

