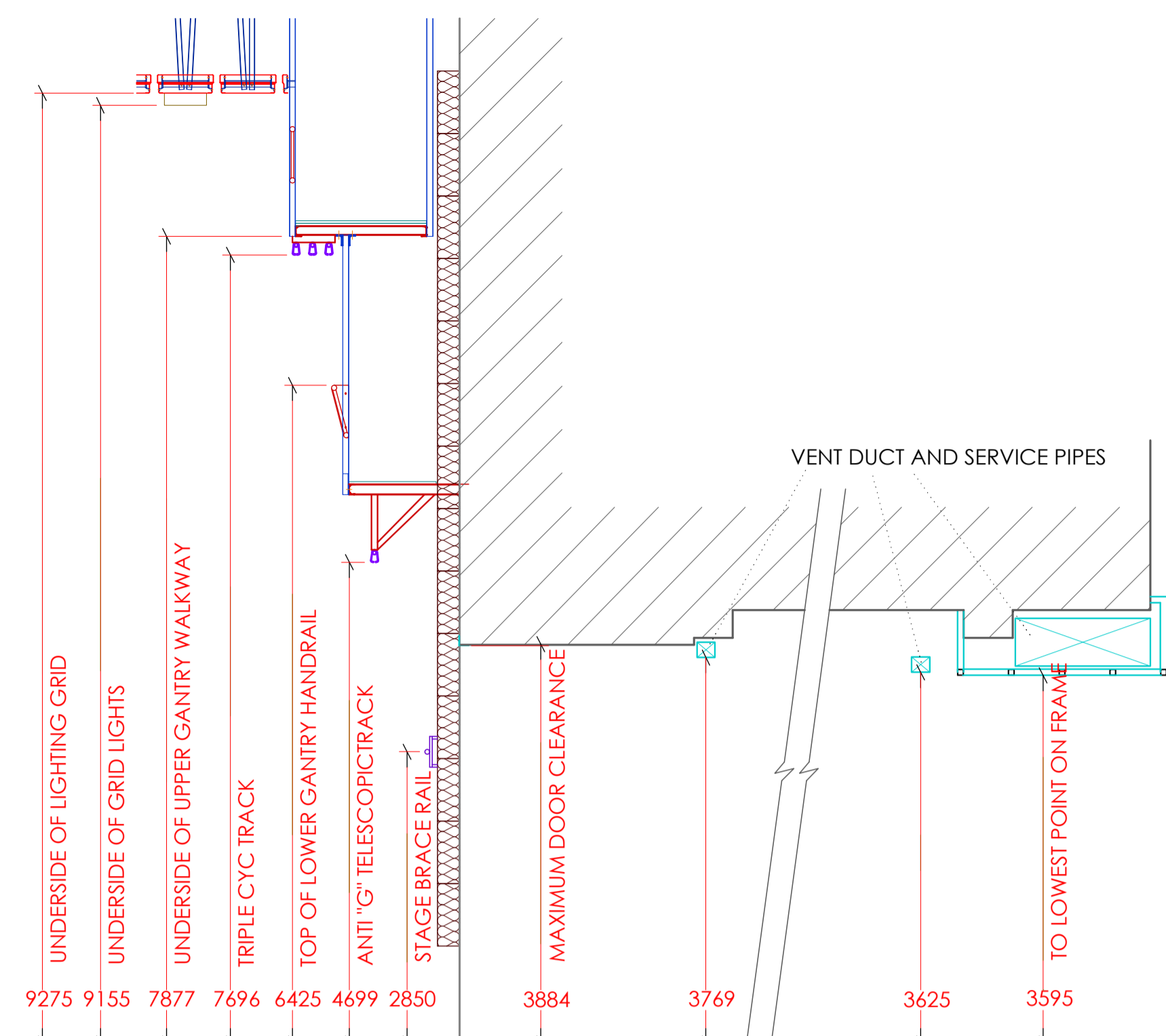


These plans are indicative only and The London Studios (TLS) does not guarantee the accuracy or completeness of any description, dimensions and other details contained herein. [Please rely on your own survey for accurate and precise measurements and detail].

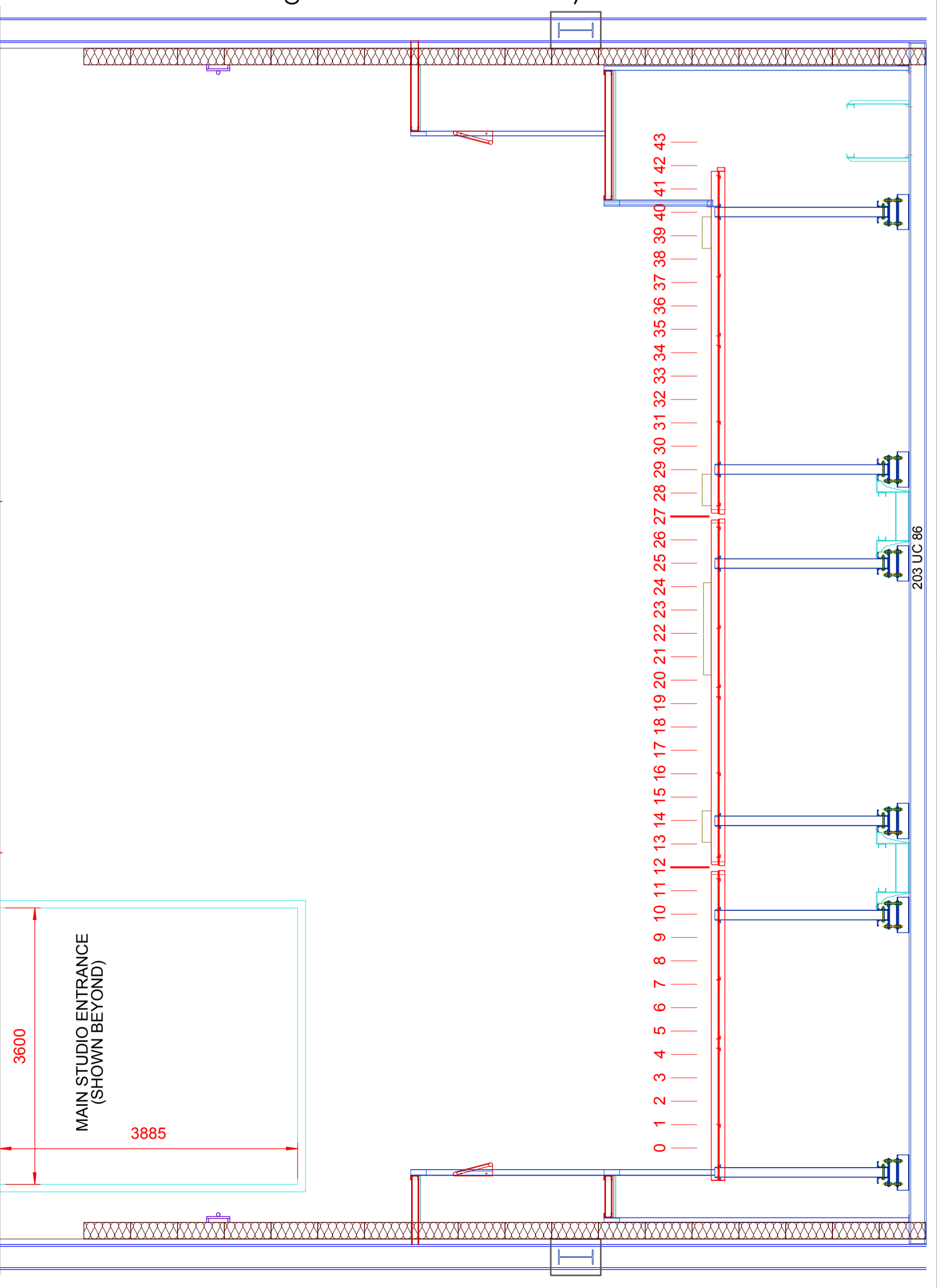
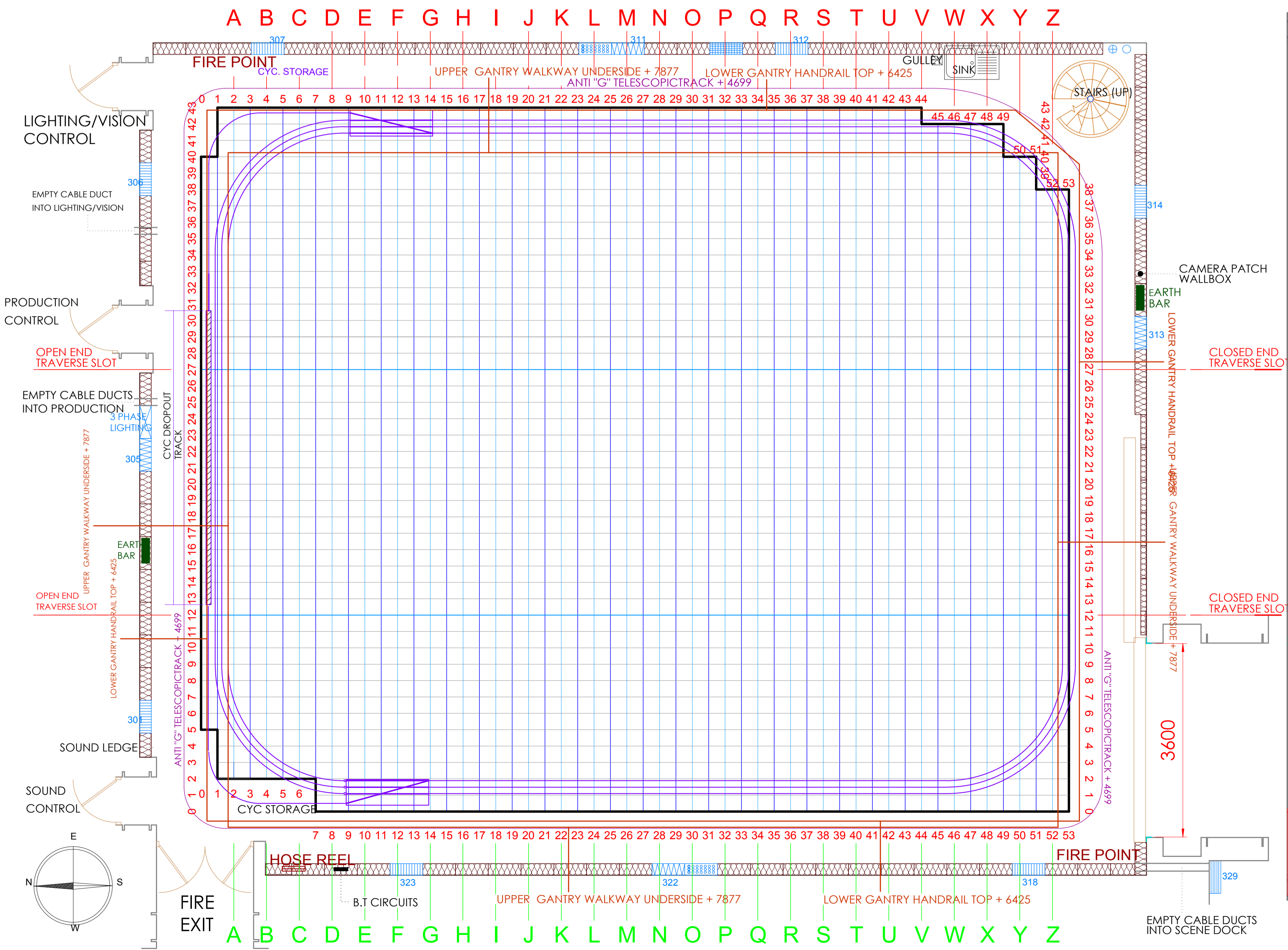
TECHNICAL LEGEND

- STAGE TRACK S.W.L 110KG PER 4.22 MTR
 - LIGHTING TRACK S.W.L 300KG PER 4.22 MTR
- FLOOR LOAD = NOT EXCEED 1000Kg/m²
 MAIN C.Y.C. ON CENTRE TRACK- 52220mm LONG
 TRIPLE C.Y.C. TRACK AT + 7696mm UNDER
 ANTI-G TELESCOPE TRACK AT +4699mm UNDER
 LOADING GANTRY FLOOR (LIGHTING) AT + 7877mm
 GANTRY RAIL AT + 6425mm

SPECIFIC INSTRUCTIONS



SECTION THROUGH SCENERY DOOR
Max Height of Trucked Scenery 3570



PRODUCTION: _____
 DIRECTOR: _____
 PRODUCTION MANAGER: _____
 STUDIO MANAGER: _____
 DESIGNER: _____
 LIGHTING DIRECTOR: _____
 DRAWN BY: _____
 DATE OF ISSUE: _____
 DRAWING ISSUE #: _____
 SET & LIGHT DATE: _____

