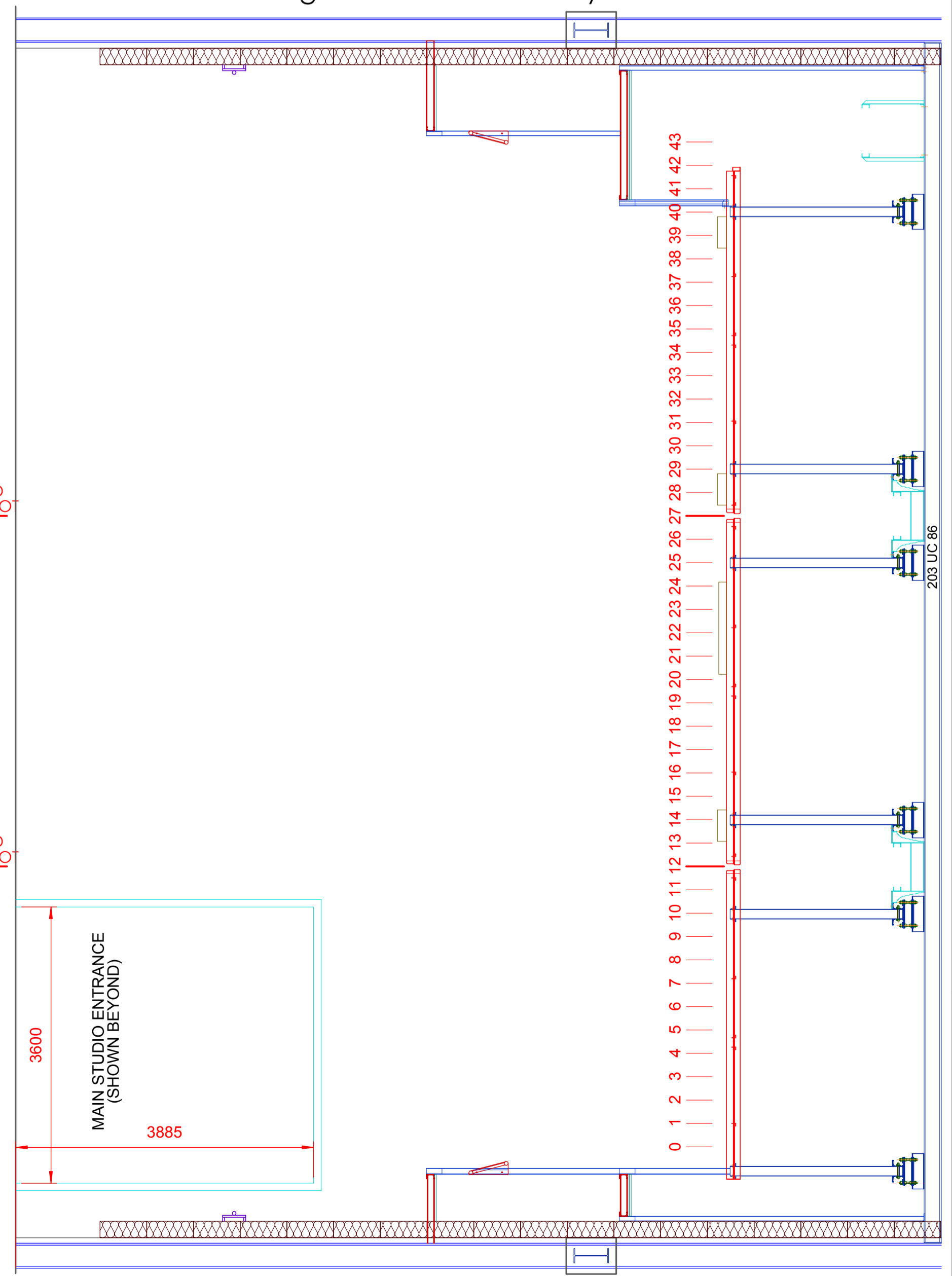
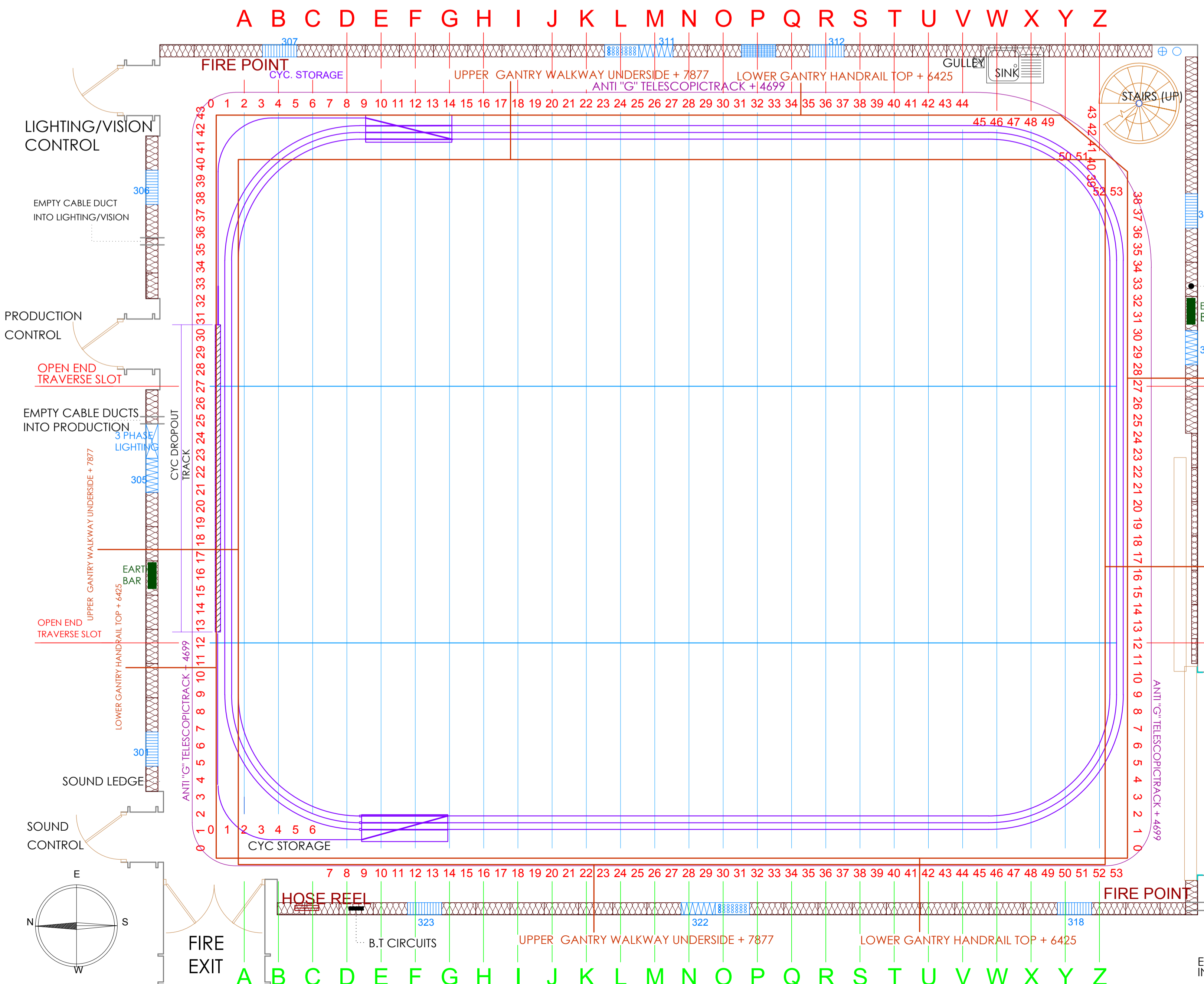
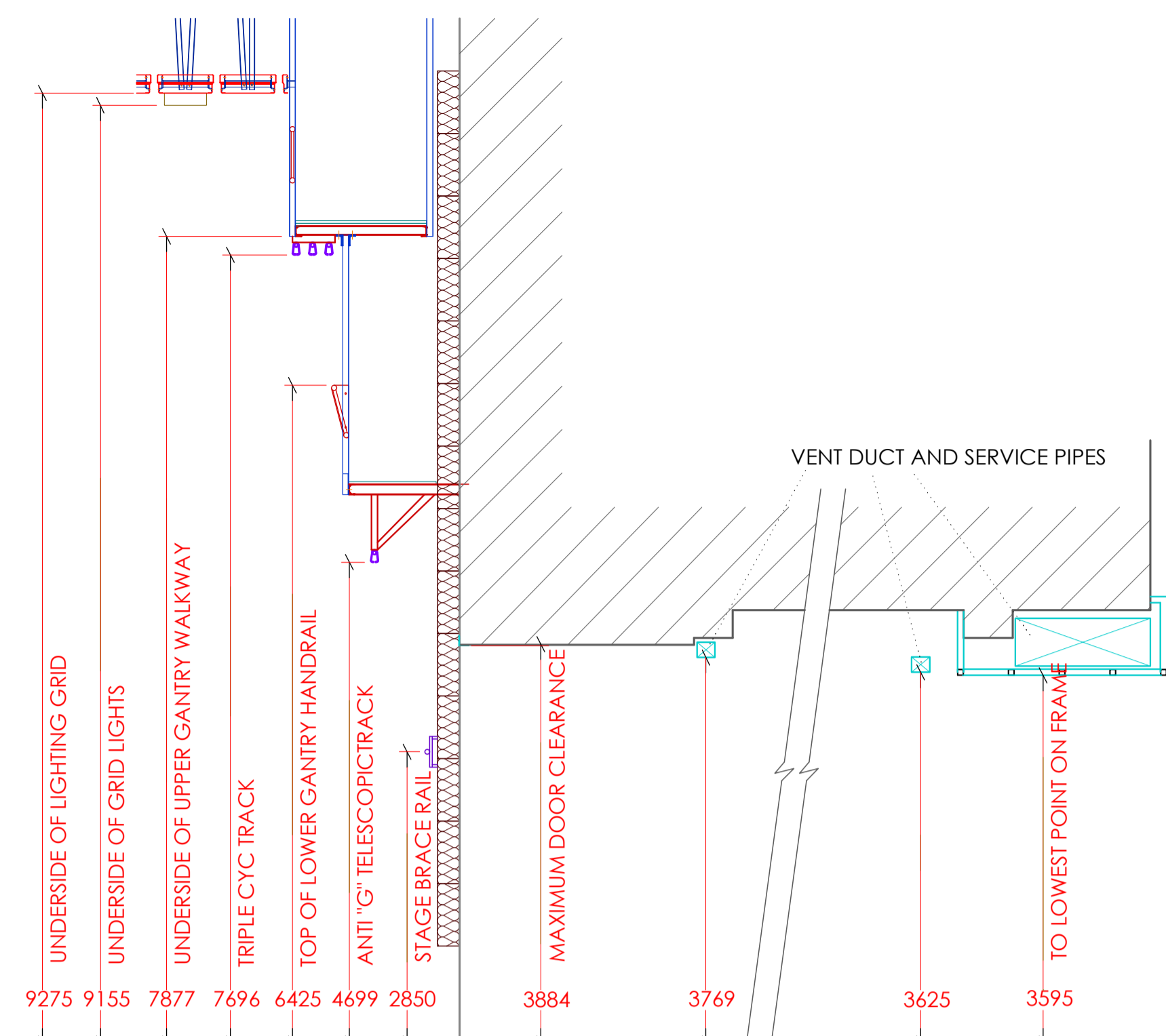


These plans are indicative only and The London Studios (TLS) does not guarantee the accuracy or completeness of any description, dimensions and other details contained herein. [Please rely on your own survey for accurate and precise measurements and detail].

TECHNICAL LEGEND

- STAGE TRACK S.W.L 110KG PER 4.22 MTR
- LIGHTING TRACK S.W.L 300KG PER 4.22 MTR
- FLOOR LOAD = NOT EXCEED 1000Kg/m²
- MAIN C.Y.C. ON CENTRE TRACK- 52220mm LONG
- TRIPLE C.Y.C. TRACK AT + 7696mm UNDER
- ANTI-G TELESCOPE TRACK AT +4699mm UNDER
- LOADING GANTRY FLOOR (LIGHTING) AT + 7877mm
- GANTRY RAIL AT + 6425mm

SPECIFIC INSTRUCTIONS



PRODUCTION: _____

DIRECTOR: _____

PRODUCTION MANAGER: _____

STUDIO MANAGER: _____

DESIGNER: _____

LIGHTING DIRECTOR: _____

DRAWN BY: _____

DATE OF ISSUE: _____

DRAWING ISSUE #: _____

SET & LIGHT DATE: _____

